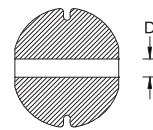
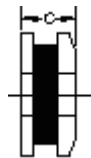
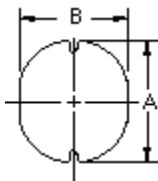


### HPC0703 TYPE

#### TYPE

#### DIMENSION

HPC 0703: 10 $\mu$ H ~ 330 $\mu$ H



A : 7.8 $\pm$ 0.3  
B : 7.0 $\pm$ 0.3  
C : 3.8 Max  
D :1.6 REF

#### SPECIFICATION

ITEM	L	DCR	IDC
HPC0703	( $\mu$ H)	MAX. ( $\Omega$ )	MAX. (A)
100M	10 $\pm$ 20%	0.08	1.44
120M	12 $\pm$ 20%	0.09	1.39
150M	15 $\pm$ 20%	0.10	1.24
180M	18 $\pm$ 20%	0.11	1.12
220M	22 $\pm$ 20%	0.13	1.07
270M	27 $\pm$ 20%	0.15	0.94
330M	33 $\pm$ 20%	0.17	0.85
390M	39 $\pm$ 20%	0.22	0.74
470M	47 $\pm$ 20%	0.25	0.68
560K	56 $\pm$ 10%	0.28	0.64
680K	68 $\pm$ 10%	0.33	0.59
820K	82 $\pm$ 10%	0.41	0.54
101K	100 $\pm$ 10%	0.48	0.51
121K	120 $\pm$ 10%	0.54	0.49
151K	150 $\pm$ 10%	0.75	0.40
181K	180 $\pm$ 10%	1.02	0.36
221K	220 $\pm$ 10%	1.20	0.31
271K	270 $\pm$ 10%	1.31	0.29
331K	330 $\pm$ 10%	1.50	0.28

K:  $\pm$ 10% M:  $\pm$ 20%

\* Hong can design any part to your requirements with different inductance.

\* All parameters as this content presented are subject to final specifications both sides confirmed.